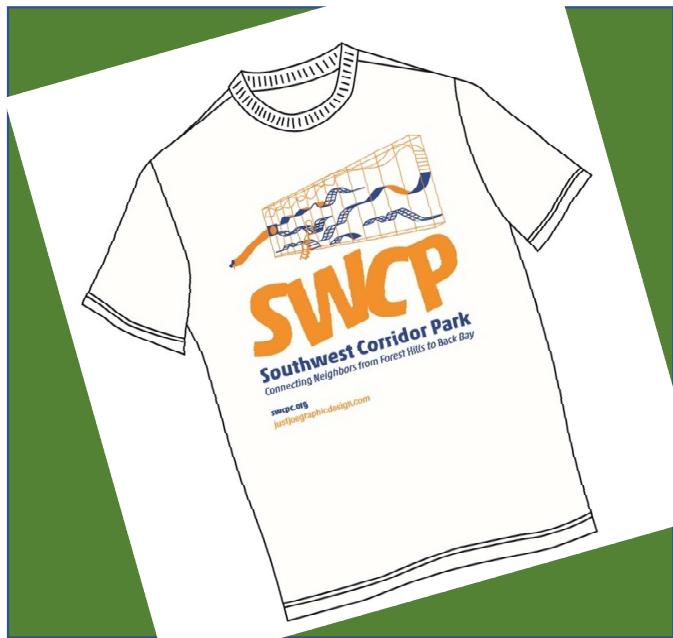




PMAC 2017 Annual Meeting

Southwest Corridor Park

Connecting Neighbors from Forest Hills to Back Bay



Park Volunteers / Stewards Gardening and Landscaping



Park Stewards / Volunteers

- Over 1,500 volunteer hours
- Approximately 25 locations in the Southwest Corridor Park, in the South End / Back Bay, Jamaica Plain/Stony Brook/Green Street/Forest Hills and Jackson Square.
- Volunteers work in small groups, on their own, and in volunteer day groups, throughout the four seasons.

Park Stewards / Volunteers
Gardening & Landscaping



Park Stewards / Volunteers
Gardening & Landscaping



We continue a theme of both edible landscaping and use of native plants. Featured here – the Festival Garden in JP.



Park Stewards / Volunteers
Gardening & Landscaping

Now in its second
year – the Herbstalk
garden is a raised bed
demonstration garden featuring herb plants.





Park Stewards / Volunteers
Gardening & Landscaping



JP Butterfly Garden



Park Stewards / Volunteers
Gardening & Landscaping

The addition of the JP butterfly garden gives us two gardens focused on butterfly plants. Featured here – a release of a newly-emerged monarch in the garden near Mass Ave.



Family
Community
Garden –
At New
Minton
Street
Playground





Family
Community
Garden –
At New
Minton
Street
Playground



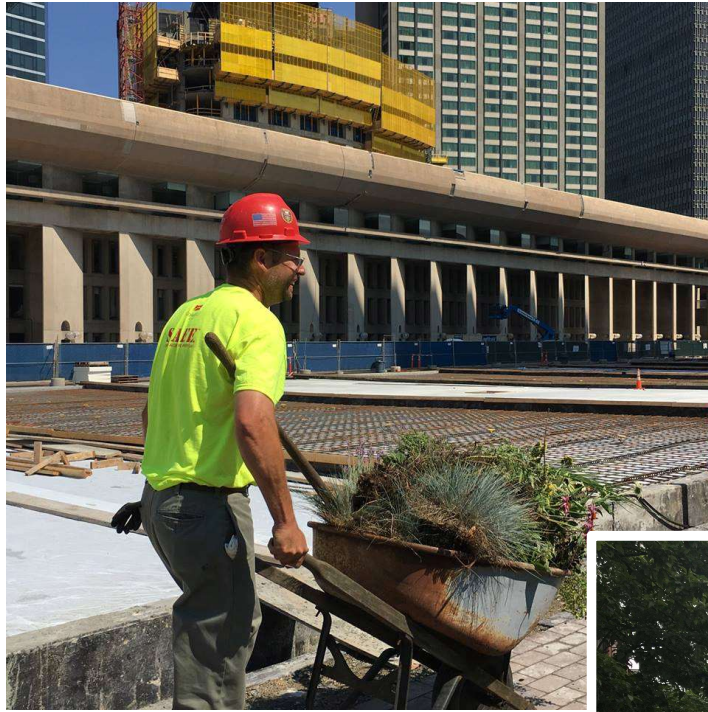


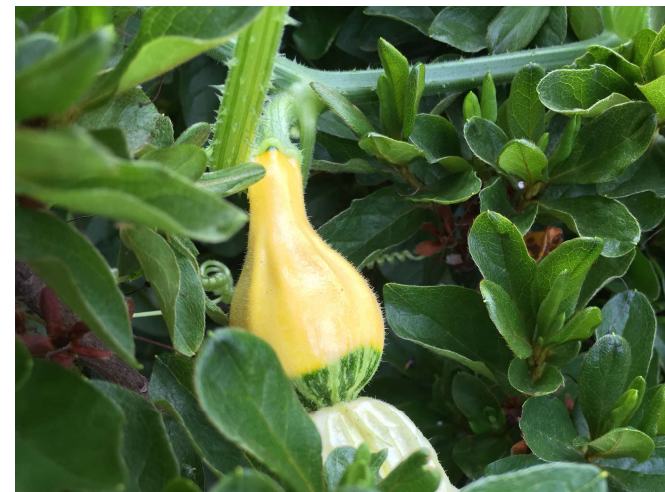
A volunteer highlight this summer: One of our volunteers made a connection between the SWCPC and the project managers of the Christian Science Plaza renovation project. Since the nearby Christian Science Church is repairing and restoring the Christian Science Plaza, they donated perennials from their gardens to the Southwest Corridor Park Conservancy. One Saturday morning in July, the neighborhood was dotted with gardeners and wheelbarrows full of plants, transporting plants to the park. These plants are now found in gardens around the park, as very welcome additions to the landscape.





Plant Donation from the Christian Science Plaza Project





SWCPC volunteers, including neighborhood volunteers, BostonCares, Northeastern University, the Marriott Hotel and many school and corporate groups, provided over 1,500 hours of volunteer service so far this year.





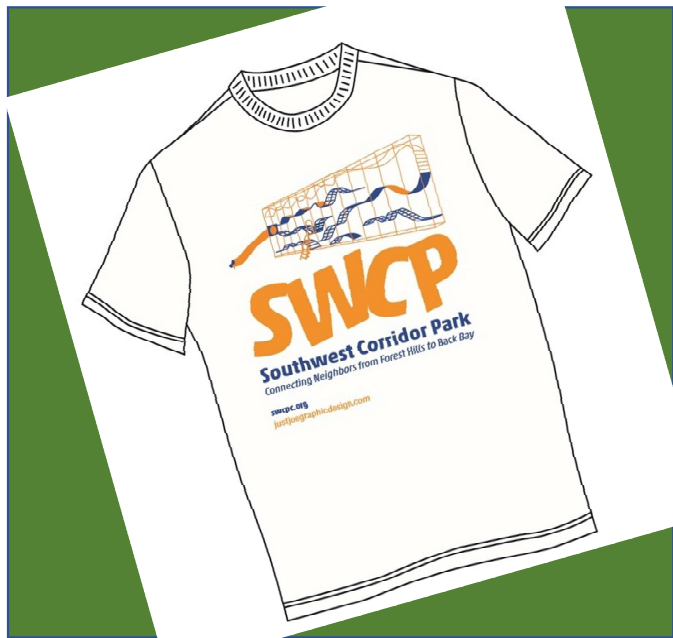
Park Stewards / Volunteers Gardening & Landscaping

Hymn to the Park - the Southwest Corridor

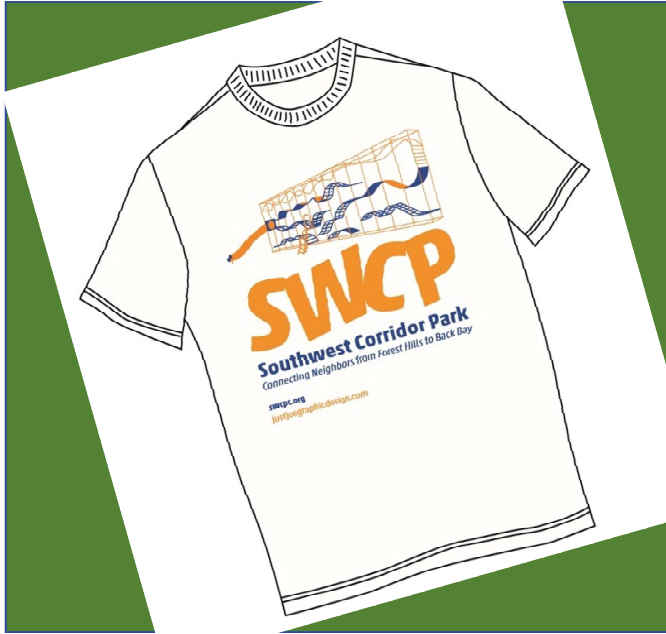
By Curtis Mitchell

What do you have to gripe about?!
Things are mostly like days of yore
Along the Southwest Corridor.
Hand-in-hand they traipse in galore
Showing love, showing affection -
Along the route of the Southwest Corridor.
Adults and children riding on all sorts of wheels - and more,
Along the Southwest Corridor.
Bands, picnics, frolic like never done to the core
All this along the Southwest Corridor.
Here a dog, there a dog, some big, some small - what more?
Along the Southwest Corridor.
Flowers and plants - some never even seen before -
Exotic, mundane, all
Over the Southwest Corridor.
Little babes riding in strollers and more
With laughs, giggles by the score
It can and does go on and on within this dreamland park
Called the Southwest Corridor.

Curtis Mitchell shared this poem with SWCP volunteer, sharing also that he is currently homeless and considers the Southwest Corridor Park a favorite place to be. As much as Bostonians often gripe about city living, this poem is a thoughtful "hymn" to the neighborliness found within the park.



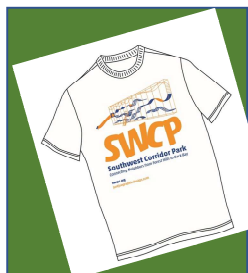
Youth and Family Programming



Youth and Family Programming

Youth and Family Programming

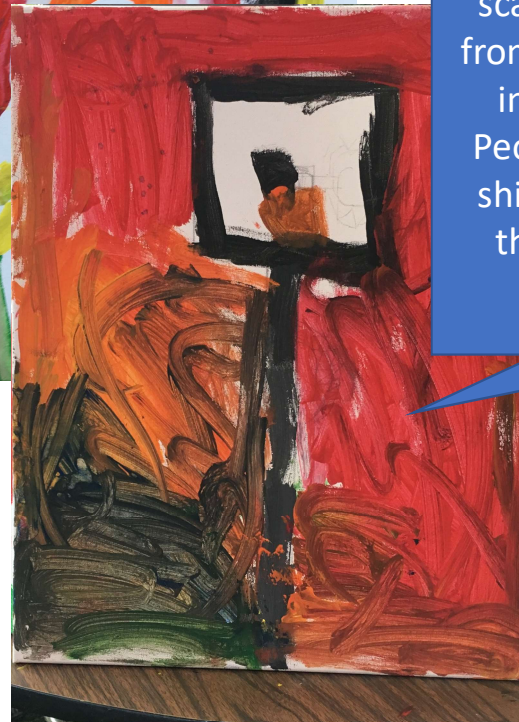
- For the second summer, the Southwest Corridor Park Management Advisory Committee, in partnership with Northeastern University and the Southwest Corridor Park Conservancy sponsored six **mini-grants** to support youth and family programming in the Southwest Corridor Park.
- **Children's Garden** in Jackson Square
- **Family Community Garden** in New Minton Street Playground
- Formal and informal connections with other youth programs.



Mini-Grants – With Northeastern University and the Southwest Corridor Park Conservancy

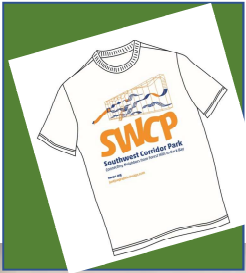
- Art supplies for the USES Children's Art Center's "Paint Outs" in the Southwest Corridor Park
- Printing for IBA's "Exploring Community" book authored by children in their summer program
- Expenses for Boston Explorer program's bicycle exploration of the Southwest Corridor Park
- Materials for Wee the People's special event at JP Porchfest, featuring history of community action
- Instructor stipends and supplies for Mildred Hailey Tenants Association's (Bromley Heath) Mom-and-Me programming and explorations in the park
- Zumba-with-the-police, sponsored by Tree of Life/Arbol De Vida, with BPD E-13.

USES Children's Art Center's "Paint Outs"



USES staff report that children wore our new SWCP tee-shirts on a scavenger hunt along the corridor, from Titus Sparrow Park culminating in lunch at BPL / Copley Square. People in the park noticed the tee-shirts and asked the leaders about their connections with the park.

Zumba with the Police



Zumba class in the field near English HS led by an E-13 Community Service Officer and coordinated by Arbol de Vida/Tree of Life.

BPD leadership joined the group one evening, with the Commissioner and other BPD leadership, state police, new BPD cadets, along with the new BPD ice cream truck.

Boston Explorers – Urban Camp for Kids



Our first ever, Boston Explorers Bike Week was a huge success and thanks, in part to our friends at Southwest Corridor Park Management Advisory Council. Your mini-grant helped fund this new initiative. As we shared in our grant application, at Boston Explorers we are committed to enrolling youngsters from families with limited resources. Our goal is to explore Boston by foot, T, bike and boat.

We believe all children should have full access to Boston—its history, culture, natural, and commerce-rich resources. In doing so, we give kids a greater shot at being active citizens and stewards of our city.

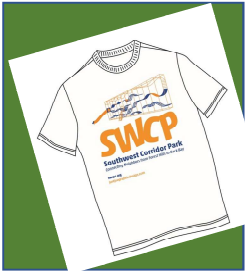
For your generosity, your community spirit and for helping to make our city a place where all kids thrive and succeed. Thank you. We are grateful for your support.



Boston Explorers – Urban Camp for Kids



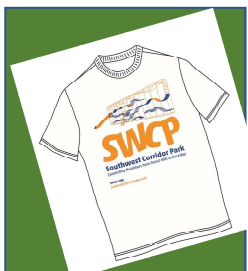
Wee the People – At JP PorchFest



Tanya Nixon-Silberg (right) of Wee The People helps kids stencil T-shirts at their “Protestival” at Boston’s Mozart Park, July 8, 2017. (Greg Cook)



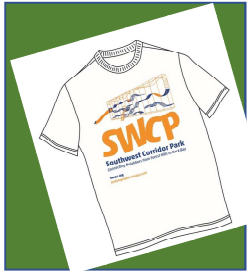
Wee The People is a social justice project that engages kids around social differences, injustice, and protest through art workshops and interactive games. JP Porchfest 2017 marked the second installment of Protestival!; this summer we were fortunate to be hosted by Mozart Park with the support of The Southwest Corridor PMAC grant and Hyde Jackson Square Main Streets, whose constituency includes a large and vibrant Latinx community.



Jackson Square Children's Garden

This is the second year of collaboration between RealKidz Boston and the Southwest Corridor Park, with weekly children's garden activities in the Jackson Square Children's Garden. The garden, located near the Lorber Family Playground, features mint, borage, clovers, strawberries, squash and watermelon plants, kale, cucumbers, and a variety of flowers.



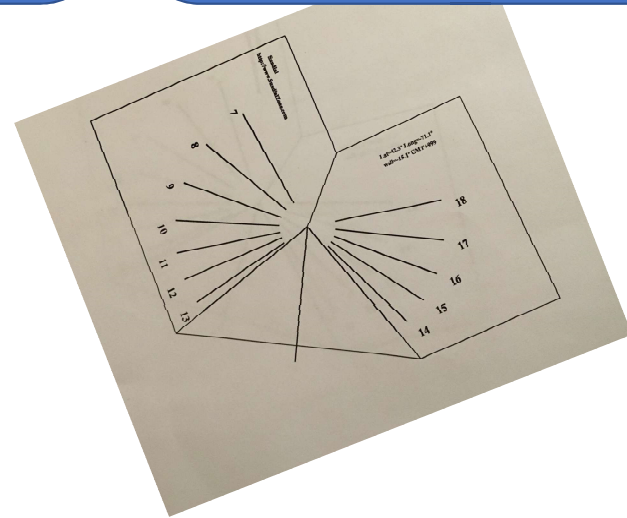


Sundials, Solar Energy and the 2017 Solar Eclipse



The Boston Explorers Bike Week included an opportunity to view the 2017 Solar Eclipse.

Complemented by a “Science Wednesday” program, children working in the Children’s Garden also learned about solar energy, sundials and the solar eclipse this year.



IBA – Exploring Community



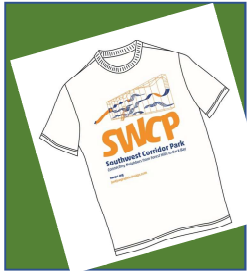
Name: JAY

My Community

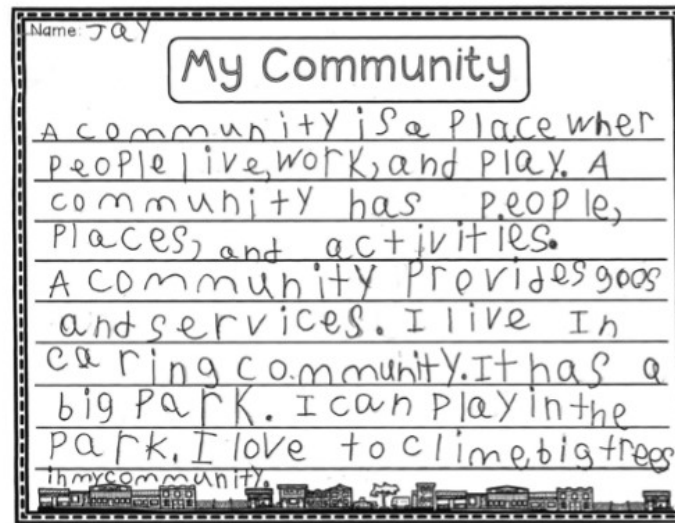
A community is a place where people live, work, and play. A community has people, places, and activities. A community provides goods and services. I live in a caring community. It has a big park. I can play in the park. I love to climb big trees in my community.



IBA – Exploring Community

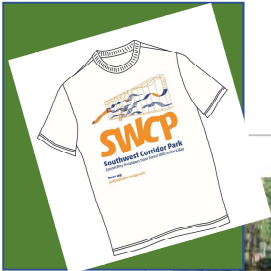


Students explore SOUTHWEST CORRIDOR PARK



The Southwest Corridor Park is a five-mile-long park. The park goes along the path of the Orange Line transit from Forest Hills to Back Bay. These five miles of park land connect people from many neighborhoods. The park also connects neighbors in other ways. People get to know each other through gardens and bicycling and playgrounds and sports. Parks are an important part of city life.

IBA – Exploring Community



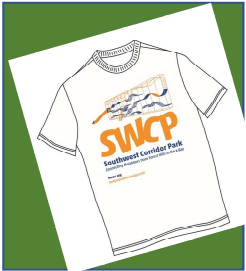
In the 1960s, the land that is now a park almost became a highway. At that time, all over the country, there were big highways being built right through city neighborhoods. The

people of Boston said they did not want a highway. They made their voices heard. After a long struggle, the highway plans were cancelled. Instead we have a park and bike path and subway line. Ever since then, many people have worked together to take care of the park and make it someplace special for our neighborhoods.



This summer has been great! The students demonstrated a deep understanding of community as a place but also as a part of them. They shifted their mindset from what the community has and provides to what their role is in the community. It has been wonderful seeing them develop an activist lens. - Veronica Navarro, ESL Lead Teacher





IBA – Exploring Community

Students used their observations of the Southwest Corridor Park and the community to create watercolor depictions of their idea of community in a Dot, just as Vashti created inspired artwork in Peter H. Reynolds's *The Dot*.





Community Partnerships



Community Partners

Community Partners

- The SWCPC works with BostonCares to create a calendar of park volunteer days and many hours are provided in the park by BostonCares volunteers.
- PMAC members have participated in Boston Park Advocates events and Environmental League of Massachusetts advocacy work; members have also followed the development of the neighboring Roxbury Heritage Park.
- The Bicycle/walking path subcommittee is working with City of Boston, Northeastern University and DCR to advocate for path improvements.
- Northeastern University's City and Community Affairs continues to be a strong partner, including support for mini-grants, participation by students in PMAC meetings and SWCPC volunteer days. The PMAC co-chair is a member of the NEU CAB Advisory Board.



Community Partners

Community Partners

- Neighborhood groups are key partners, looking at issues including development, housing and open space, homelessness and public safety.
- PMAC members who are members of South End neighborhood groups have participated in a neighborhood task force on homelessness and addiction.
- The rapid pace of development in Boston has brought more focus on the impact of development on the SWCP and surrounding neighborhoods.

Local and state politicians are supportive of the work we do in the Southwest Corridor Park and we continue to build and nurture these relationships.

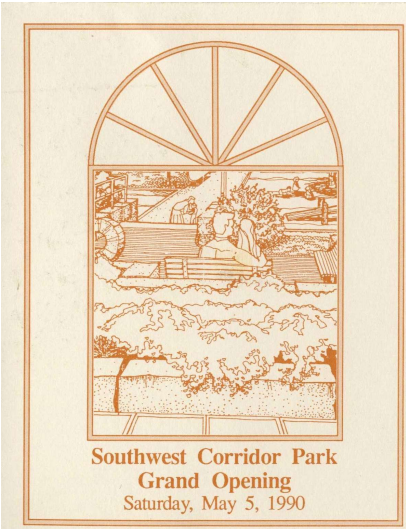


Dogs and Dog Parks

- The Carleton Court Dog Park continues to support the dog park in the South End / Back Bay, with ongoing fundraising, maintenance and education.
- PMAC members, including the Carleton Court Dog Park volunteers, SWCPC coordinator for JP and others, have supported an advocacy effort for finding a dog park location in JP.







For more information visit
our website or follow our
social media pages.

Visit <http://swcpc.org>



Small Group Exercise

In Small Groups:

- Define some criteria for evaluating goals... make up icons for criteria:
 - Such as:
 - (SH) = Short-term, achievable;
 - (HI)=High importance;
 - (CV)=Community Value
 - (Vol)=Volunteer-Led
 - (DCR)=DCR Led
- List goals on post-it notes
- Sort & classify